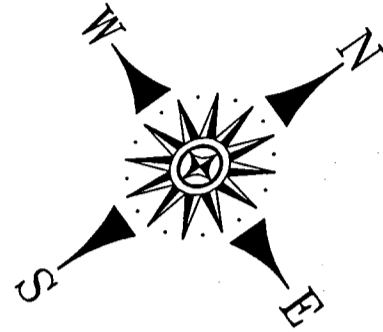


Plat File 13 Slide 144

NCGS (NAD 83/1986) TIES FROM NCGS MONUMENT "HALLELUJAH" TO EACH OF THE INDIVIDUAL UNITS with FINISH FLOOR ELEV and CEILING ELEV

Course	Bearing	Distance	Unit #	Finish Floor Elev	Ceiling Elev
Ⓐ	N33°40'19"E	992.39'	402 Upper Floor	2214.67'	2225.67'
Ⓑ	N34°04'52"E	1194.15'	410 Upper Floor	2214.67'	2226.83'

(CEILING ELEVATIONS PROVIDED BY BUILDER/OWNER SCOTT LAPELL)



NCGS NORTH NAD 83/1986

ARCHITECT STATEMENT

- 1) THESE DRAWINGS ARE BASED IN PART UPON THE REPRESENTATIONS OF OTHERS AND ARE NOT FOR BIDDING, CONSTRUCTION OR PERMITTING PURPOSES.
- 2) BASE BUILDING PLANS ARE COPIED FROM CONSTRUCTION DOCUMENTS PREPARED AS PART OF BASE BUILDING CONSTRUCTION BY CALLOWAY JOHNSON, MOORE & WEST, ARCHITECTS OF RECORD.
- 3) I HEREBY CERTIFY THAT THESE PLANS FULLY AND ACCURATELY DEPICT THE LAYOUT, LOCATION, FLOOR ELEVATIONS, UNIT NUMBERS, AND DIMENSIONS OF THE UNITS AS BUILT.

LEGEND:

- ELEV SQUARE FEET
- LIMITED COMMON ELEMENT (LCE)

2009003272

TRANSLYVANIA CO, NC FEE \$21.00

RECORDED & FILED 06-10-2009 04:33:39 PM

CINDY M OWNBAY REGISTER OF DEEDS BY: TERESA D MORTON DEPUTY REGISTER OF DEEDS

PF 13 PG:144-144

Signature of Douglas K. Harris

5.14.09 DATE

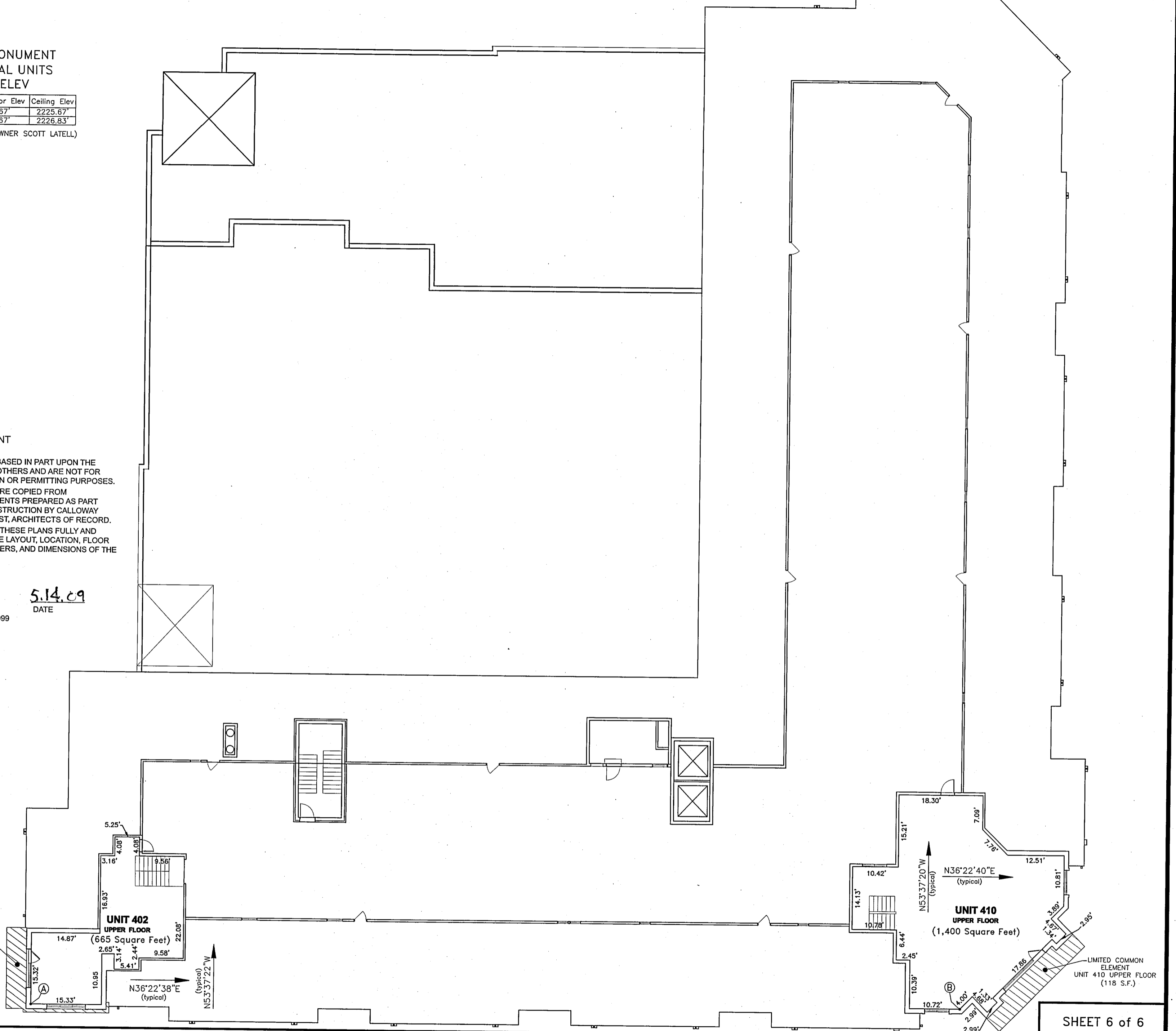
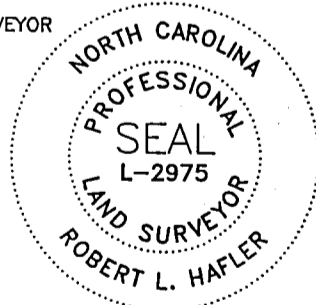
DOUGLAS K. HARRIS REGISTERED ARCHITECT 7999



WITNESS MY ORIGINAL SIGNATURE, LICENSE NUMBER, AND SEAL THIS THE 18 DAY OF May, 2009

Signature of Robert L. Hafler

ROBERT L. HAFLER PROFESSIONAL LAND SURVEYOR L-2975



LIMITED COMMON ELEMENT UNIT 402 UPPER FLOOR (90 S.F.)

LIMITED COMMON ELEMENT UNIT 410 UPPER FLOOR (118 S.F.)

PREPARED BY HAFLER LAND SURVEYING 435 S. CALDWELL STREET BREVARD, NORTH CAROLINA 28712 (828) 884-7168 FAX (828) 884-8646

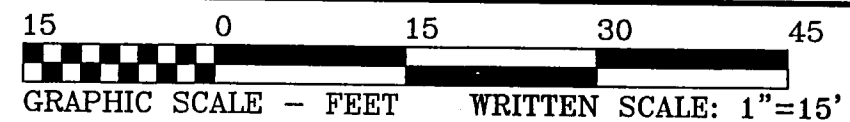


Property Situate in CITY OF BREVARD BREVARD TOWNSHIP TRANSLYVANIA COUNTY NORTH CAROLINA

FINAL PLAT of the FRENCH BROAD PLACE CONDOMINIUMS (5th Floor)

DATE Revised: April 20, 2009 MARCH 31, 2009

FIELD RECORDS DATA COLLECTOR



SHEET 6 of 6

DRAWING 5th FLOOR HLS CondoDocs COORDINATE FILE PN07003.crd PROJECT NUMBER PN09004