

Plat File 13 Slide 143

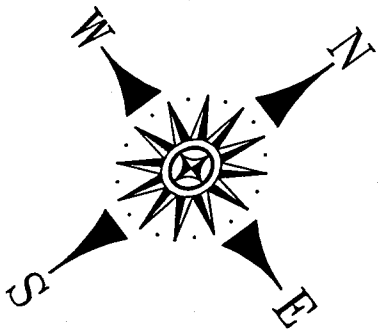
NCGS (NAD 83/1986) TIES FROM NCGS MONUMENT "HALLELUJAH" TO EACH OF THE INDIVIDUAL UNITS with FINISH FLOOR ELEV and CEILING ELEV

Course	Bearing	Distance	Unit #	Finish Floor Elev	Ceiling Elev
A	N29°48'12"E	1008.91'	UNIT 401	2202.75'	2214.17'
B	N3°40'19"E	992.39'	UNIT 402	2202.75'	2214.17'
C	N30°05'27"E	1054.88'	UNIT 404	2202.75'	2214.17'
D	N3°39'47"E	1052.46'	UNIT 405	2202.75'	2214.17'
E	N33°53'57"E	1083.38'	UNIT 406	2202.75'	2214.17'
F	N33°59'42"E	1126.92'	UNIT 408	2202.75'	2214.17'
G	N34°04'52"E	1194.15'	UNIT 410	2202.75'	2214.17'
H	N29°47'17"E	1217.18'	UNIT 412	2202.75'	2214.17'
I	N30°34'24"E	1144.67'	UNIT 413	2202.75'	2214.17'
J	N27°46'24"E	1224.93'	UNIT 414	2202.75'	2214.17'
K	N28°24'44"E	1149.90'	UNIT 415	2202.75'	2214.17'
L	N26°17'49"E	1230.30'	UNIT 416	2202.75'	2214.17'
M	N23°28'55"E	1168.27'	UNIT 417	2202.75'	2214.17'
N	N23°40'18"E	1203.61'	UNIT 418	2202.75'	2214.17'

(SEE NOTE #15 REGARDING CEILING ELEVATIONS)

ARCHITECT STATEMENT

- 1) THESE DRAWINGS ARE BASED IN PART UPON THE REPRESENTATIONS OF OTHERS AND ARE NOT FOR BIDDING, CONSTRUCTION OR PERMITTING PURPOSES.
- 2) BASE BUILDING PLANS ARE COPIED FROM CONSTRUCTION DOCUMENTS PREPARED AS PART OF BASE BUILDING CONSTRUCTION BY CALLOWAY JOHNSON, MOORE & WEST, ARCHITECTS OF RECORD.
- 3) I HEREBY CERTIFY THAT THESE PLANS FULLY AND ACCURATELY DEPICT THE LAYOUT, LOCATION, FLOOR ELEVATIONS, UNIT NUMBERS, AND DIMENSIONS OF THE UNITS AS BUILT.



DOUGLAS K. HARRIS
REGISTERED ARCHITECT 7999

5.14.09
DATE



NCGS NORTH
NAD 83/1986

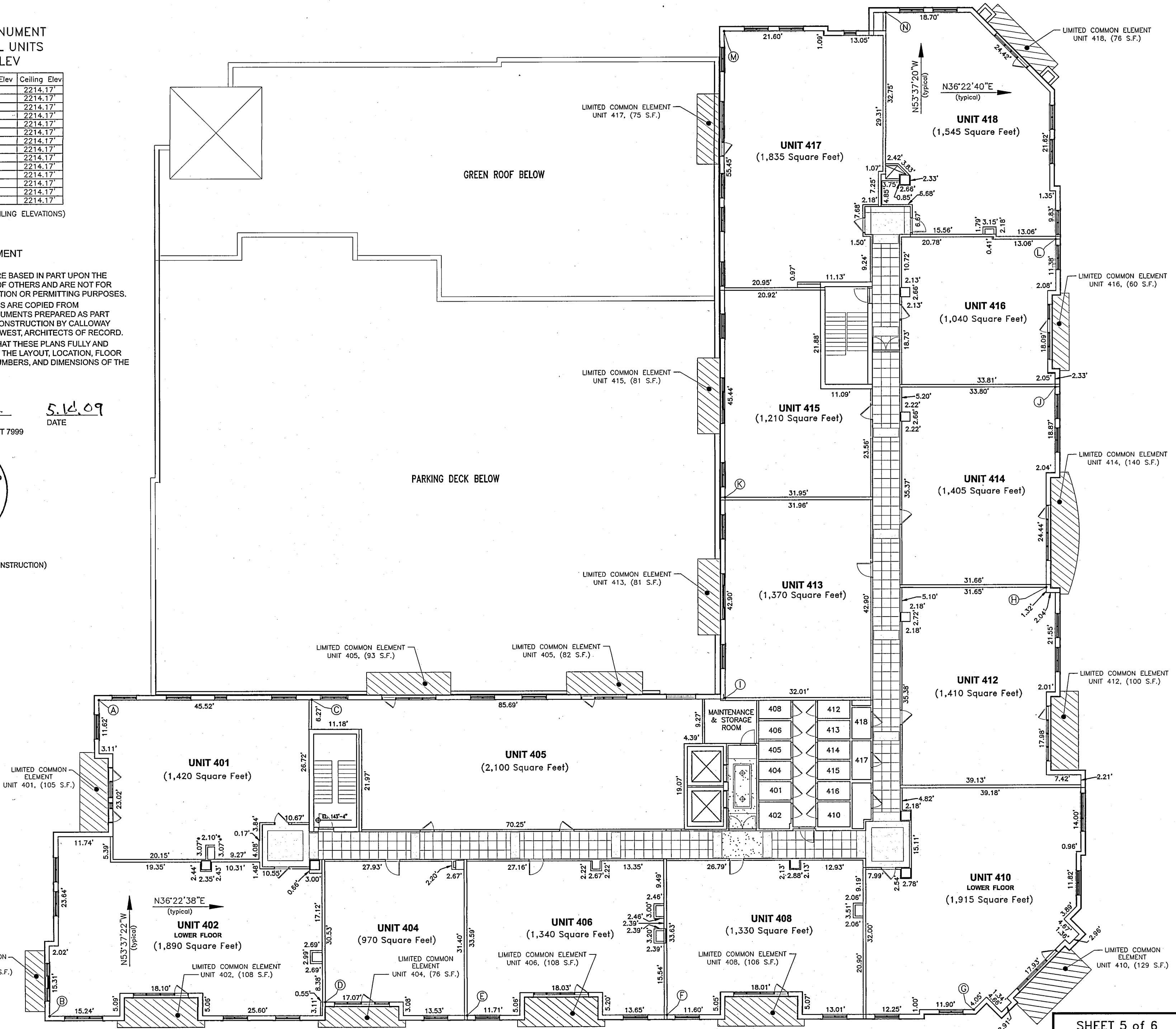
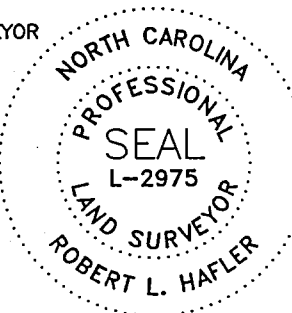
LEGEND:

- 3.02* ASTERISK DENOTES ADJUSTED DISTANCE (INCOMPLETE WALL CONSTRUCTION)
- ELEV ELEVATION
- S.F. SQUARE FEET
- LIMITED COMMON ELEMENT (LCE)

2009003271
 TRANSLYVANIA CO, NC FEE \$21.00
 PRESENTED & RECORDED:
 06-10-2009 04:33:38 PM
 CINDY M OWNBEY
 REGISTER OF DEEDS
 BY: TERESA D MORTON
 DEPUTY REGISTER OF DEEDS
 PF 13
 PG:143-143

WITNESS MY ORIGINAL SIGNATURE, LICENSE NUMBER, AND SEAL THIS THE 18 DAY OF May, 2009

ROBERT L. HAFLER
PROFESSIONAL LAND SURVEYOR
L-2975



PREPARED BY
HAFLER LAND SURVEYING
 435 S. CALDWELL STREET
 BREVARD, NORTH CAROLINA 28712
 (828) 884-7168
 FAX (828) 884-8646



Property Situate in
 CITY OF BREVARD
 BREVARD TOWNSHIP
 TRANSLYVANIA COUNTY
 NORTH CAROLINA

FINAL PLAT
 of the
FRENCH BROAD PLACE
 CONDOMINIUMS (4th Floor)

DATE Revised: April 20, 2009
 MARCH 31, 2009
 FIELD RECORDS
 DATA COLLECTOR
 15 0 15 30 45
 GRAPHIC SCALE - FEET WRITTEN SCALE: 1"=15'

SHEET 5 of 6
 DRAWING
 4th FLOOR HLS Condo Docs
 COORDINATE FILE
 PN07003.crd
 PROJECT NUMBER
 PN09004